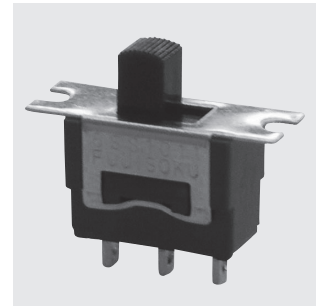


# 8SS

## Sub-miniature Slide Switches

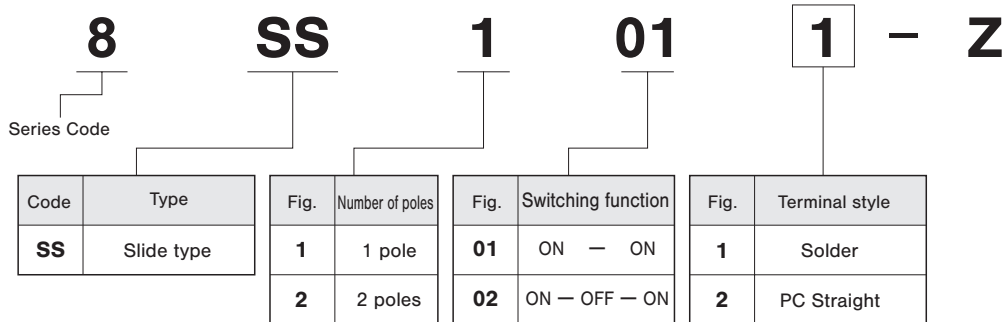


RoHS Compliant

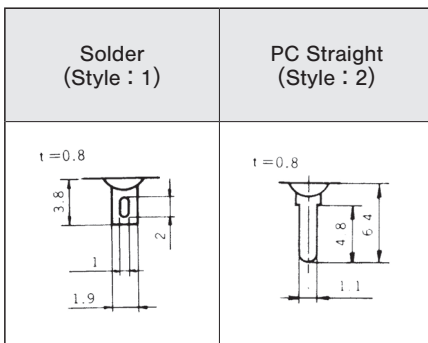
### Specifications

Contact specs.	Silver contacts		
Rating	Max.	125 VAC 6 A 30 VDC 4 A	
	Min.	5 VAC/DC 10 mA	
Initial contact resistance	10 mΩ max.(2~4 VDC 1 A)		
Initial dielectric strength	1,000 VAC 1 minute		
Initial insulation resistance	1,000 MΩ min. (500 VDC)		
Electrical life	ON - ON	30,000 cycles	
	ON - OFF - ON	20,000 cycles	
Mechanical life	100,000 cycles		
Operating temperature range	-30~+85°C		
Storage temperature range	-40~+85°C		

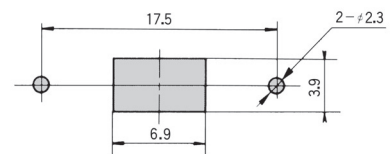
### Part Numbering



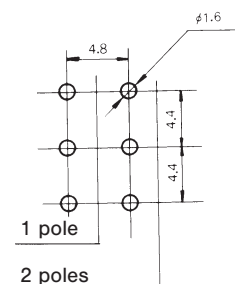
### Terminal Styles



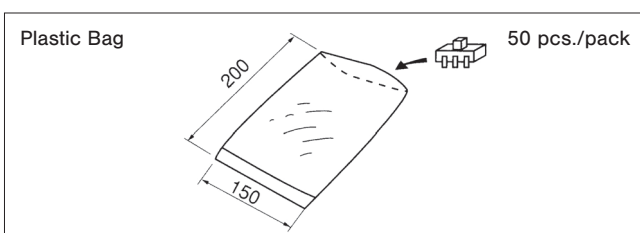
### Panel Cut-Out Dimensions



### PC Hole Layouts

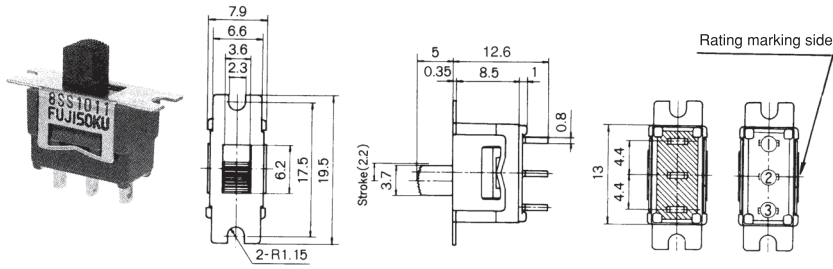


### Packaging Specifications



**SPDT**

**Solder**



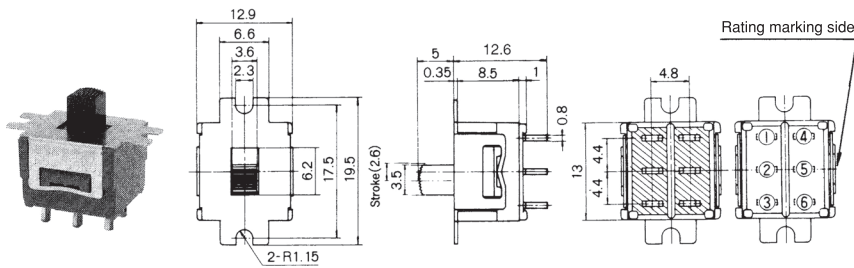
**S/D**

The terminal numbers are not shown on the switch.

Switching function	Viewed from rating marking side		
Part No.			
<b>8SS1011-Z</b>	ON	-	ON
<b>8SS1021-Z</b>	ON	OFF	ON
Connecting terminals	2-1	-	2-3

**DPDT**

**Solder**



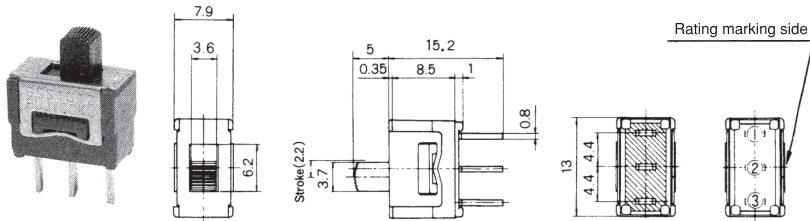
**S/D**

The terminal numbers are not shown on the switch.

Switching function	Viewed from rating marking side		
Part No.			
<b>8SS2011-Z</b>	ON	-	ON
★ <b>8SS2021-Z</b>	ON	OFF	ON
Connecting terminals	2-1 5-4	-	2-3 5-6

**SPDT**

**PC Straight**



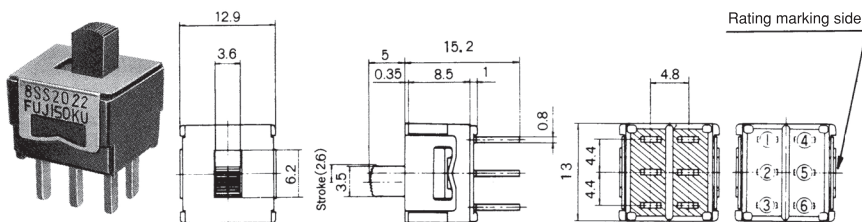
**P/C**

The terminal numbers are not shown on the switch.

Switching function	Viewed from rating marking side		
Part No.			
<b>8SS1012-Z</b>	ON	-	ON
★ <b>8SS1022-Z</b>	ON	OFF	ON
Connecting terminals	2-1	-	2-3

**DPDT**

**PC Straight**



**P/C**

The terminal numbers are not shown on the switch.

Switching function	Viewed from rating marking side		
Part No.			
<b>8SS2012-Z</b>	ON	-	ON
★ <b>8SS2022-Z</b>	ON	OFF	ON
Connecting terminals	2-1 5-4	-	2-3 5-6

## ■Precaution

### 1. Soldering Specifications

#### (1)Manual soldering

Device : Solder iron

- ① 420°C Max. 3 sec. Max.

#### (2)Auto soldering

- ② 275°C Max. 6 sec. Max.

The above-stated soldering conditions shall apply only to switches with straight terminals. Auto soldering is not possible with right-angle terminals. Switches with right-angle terminals should be soldered manually according to the conditions specified in (1) above.

- (3)When soldering two or more terminals to the common land, use the solder resist to isolate the terminals.

### 3. Mounting

- Do not bend the terminals before mounting the switch on the PC board.
- After mounting the switch, do not place the device in such a way that the device weight will be applied on to the actuator of the switch.
- For switches with straight terminals, solder the switch on the PC board after fixing the switch on the panel with a nut.

### 2. Flux Cleaning

- (1)Solvent : Fluorine or Alcohol type.
- (2)8SS series are not washable. To wash the PC board, clean the soldering surface of the PC board with a brush so that the switch is not exposed to the cleaning solution.
- (3)Cleaning after soldering should be done after the terminal temperature falls to 90°C or below, or after leaving the switch for five minutes or longer at room temperature.

## ■Packaging Specification

